

2018 Edition

Best Kept Secrets of

Three Lakes

Economic Development Region

Try our Things to
do on Page 6

Join a club!
Check Page 42

Going Hunting?
Find tips on Page 10

PILGER ◦ MIDDLE LAKE ◦ ST. BENEDICT

THREE LAKES SCHOOL



Home of the Avengers



Three Lakes School is a K-12 school that offers a wide range of academic opportunities. We have **numerous clubs** including the Student Leadership Council, Robotics and Yearbook. We offer Music, P.A.A. Construction & Carpentry, Digital Photography, and Home Ec classes.

Exceling in sports at the Provincial Level, our **Avenger Athletics** sports program is second to none, offering golf, cross country, soccer, volleyball, basketball, badminton and track-and-field to students from grades 4-12.



Smaller class sizes not only enable more one-on-one teacher time, but also foster lifelong **friendships**.

THREE LAKES SCHOOL VALUES:

- (1) *Respect for Self and Others*
- (2) *Responsibility and Leadership*
- (3) *Integrity*
 - *Trust and Loyalty*
 - *Honesty*
 - *Fairness*



A – Ambitious
V – Virtuous
E – Excellence
N – Nurturing
G – Generous
E – Empathetic
R – Respectful & Responsible
S – Self-Disciplined

301 1st Ave S, Middle Lake, SK 306-367-2122

In the pages of this book you will find yourself discovering Three Lakes living! We are sharing some of our “Best Kept Secrets” and are inviting you to check them out for yourself. Follow the maps and experience beautiful country scenery, unique villages, new lakeshore developments, a family-friendly beach and find our local businesses and organizations.

*Sharon Carter, Chairperson
Three Lakes Economic Development Region*

Table of Contents

Three Lakes RM	4
Three Lakes RM Map	5
Three Lakes RM History	6
Community Calendar of Events	7
Things to do	8
Bird Sanctuary	9
Hunting & Fishing in Three Lakes RM	10
Farming in Three Lakes RM	11
Pilger	12
Pilger Map	13
Pilger History	14
Pilger Pumpkin Festival	17
Middle Lake	18
Middle Lake Map	19
Middle Lake History	20
Lucien Lake	23
Three Lakes 4-H Beef Club History	30
St. Benedict	36
St. Benedict Map	37
St. Benedict History	38
Smallest Fire House History	41
Community Organizations	42
Business Directory	43



R.M. of THREE LAKES

#400



(306) 367 - 2172

Incorporated in 1913, The R.M. of Three Lakes is named after the 3 major lakes in the area: Basin, Middle, and Lenore. The R.M. has a diverse landscape from plains, to rolling hills and shimmering lakes.



Our R.M. is rich in history, recreation and agriculture. In addition to the Little Moose Church and the Marcel Vey Farm historic conservation sites, the R.M. has numerous country schools and cemetery sites.





With the proper permissions, visitors can hunt, fish, hike, and enjoy our many recreational opportunities.






201 Centre Street, Middle Lake, SK S0K 2X0



LEGEND

-  Pryme Edge Consulting
-  Public Eye Promotions
-  Old Farmhouse Gift Shop
-  Three Lakes 4-H Beef Club

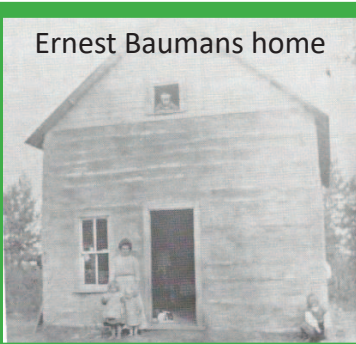
-  R.M. of Three Lakes #400
-  Sagehill Development
-  Remax (services all Three Lakes)

The "Secret" History of Three Lakes RM

Started in 1914, the RM of Three Lakes No. 400 was a name submitted by Mr. Haeglin of Verndale at the home of Ernest Bauman. The name of the RM

came from the 3 lakes, Basin Lake, Lenore Lake, and Middle Lake which was chosen on January 1st, 1914. Other names submitted were Pasqua, Roslyn, Poplar Grove, Lily Bush, Parkland and Turgeon.

Ernest Baumans home



*All information was found in the Village of Middle Lake History Book

WWW.TLEDR.CA

Community Events

Calendar of Events

June 26 - Three Lakes School Graduation

July 1 - Canada Day Celebration
at Lucien Lake Park

July 5 - Three Lakes 4-H Beef Club
Achievement Day

July 16-19 "Let's Create" Art Camp

July 17 - Village of Middle Lake Car Bingo

July 30-Aug 2 - "Creative By Nature" Art Camp

August 12 - Bethany Day

September 4 - First Day of School

September 9- Walk and Roll

September 29 - Pilger Pumpkin Festival

2019

January 5 - St. Benedict Snowmobile Rally

January 26 - Pilger Snowmobile Rally

February 9 - Middle Lake Lions Club Poker Rally



Things to do

You have now made it to the Beautiful RM of Three Lakes, but what to do? Take a look through our booklet to find exciting and fun things to do.

Our top list of things to do?

1. Check out Lucien Lake and go for a swim
2. Visit the Pilger Pumpkin Patch and Festival
3. See the Smallest Fire Hall
4. Go to a Snowmobile Rally
5. Check out the Bird Sanctuary
6. Take a walk through the Bethany trails
7. Take a drive down a country road



Bird Sanctuary

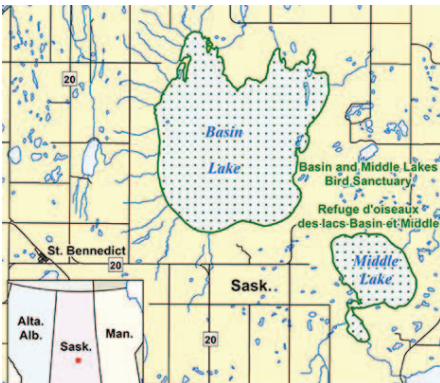
Basin and Middle Lakes are large saline parkland lakes. The main water sources for these lakes are intermittent creeks that only carry water during spring runoff and periods of heavy rains. As such, these sites are subjected to severe water level fluctuations. Basin Lake, with an average depth of 9 m, has extensive rocky and sandy areas, as well as extensive mudflats along its shoreline. This lake is essentially devoid of emergent vegetation. Middle Lake, with an average depth of 1m, has a similar shoreline profile, but extensive wet meadow zones occur on the east and south shores. Much of Middle Lake is open water with extensive stands of cattail and bulrush in the shallow marshy bay in the southwest corner of the lake.

During surveys completed in 1988 and 1989, an average of 9,578 shorebirds were recorded during three one-day surveys. Undoubtedly, thousands of additional shorebirds would be observed during long study periods. In addition to shorebirds, over 30,000 ducks have been recorded at this site during the summer moulting period.

Surveys of breeding colonial waterbirds have also been completed at this site with 227 American White Pelicans and 745 Double-crested Cormorants being recorded during the early 1990s. Piping Plovers (globally vulnerable and nationally endangered) also nest at the lake in small numbers. During the 1996 International Piping Plover Census, two pairs were observed.

Other birds known or believed to breed on these lakes include several grebe species (Pied-billed, Horned, Eared, Western and Red-necked) along with California Gulls, Black Terns, Common Terns, and Black-crowned Night Herons.

*Information found: <https://www.ibacanada.ca/site.jsp?siteID=SK075>



*Picture from <https://www.canada.ca/en/environment-climate-change/services/migratory-bird-sanctuaries/locations/basin-middle-lakes.html>



@TLEDR

Hunting in Three Lakes RM

Hunting

- Hunter Safety Course
- Hunting License
- Driver's License or ID
- Tag(s)
- Landowner Permission

Fishing

- Fishing License
- Fishing Poles
- Tackle Box
- Know fishing limit
- Life Jacket

In Three Lakes RM hunters can find white-tailed deer, moose, geese, mule deer and more.

For information on hunting and fishing dates, regulations, and limits please visit <http://www.saskatchewan.ca/hunting>



Farming in Three Lakes RM

Agriculture is a large part of the Three Lakes RM, here are a few examples of the type of crops that are planted and animals raised.



Barley



Canola



Flax



Wheat



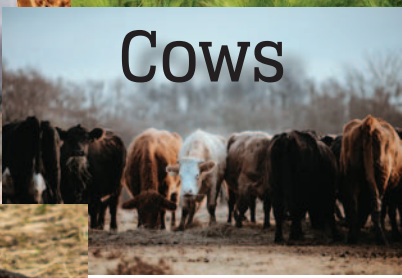
Peas



Oats



Chickens



Cows



Goats

Village of Pilger

Services

Gas
Groceries
Post Office
Coffee
Tavern
Licensed Dining
& Catering
Paint &
Autobody Shop



Snowmobile Rally

Last Saturday in
January

Pilger Pumpkin Festival

Last Saturday in
September

Wapiti Library

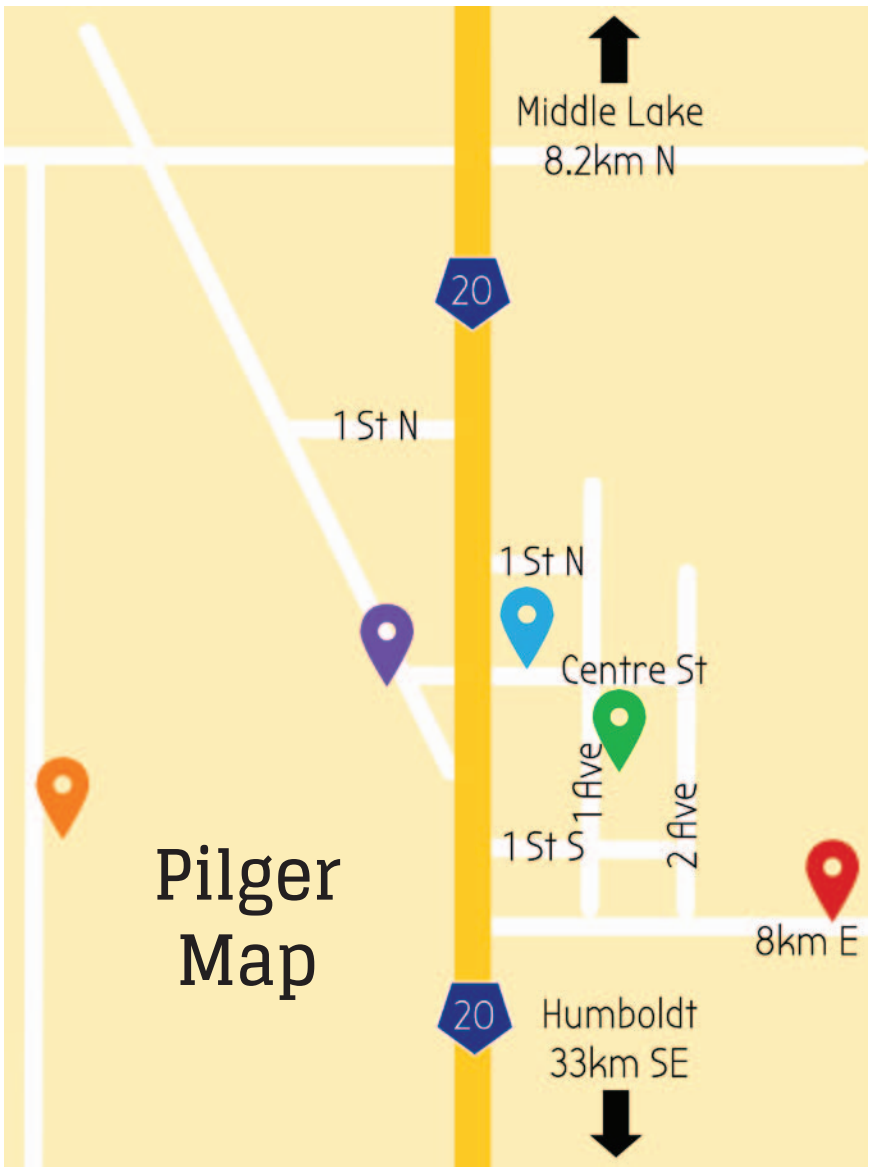
Seniors Club

Community Center

Holy Trinity Roman Catholic Church

Sports ground with unserviced camping





LEGEND

- 5th Avenue Jewellery
- M & R Hemm Holding Ltd
- Bregenser's Electric Ltd. (Grocery/Gas/Coffee)
- Pilger Rec Board
- Village of Pilger



@TLEDR

The "Secret" History of Pilger

Pilger was much more than a village in the early 1900's, it began as a district, which later formed into the village there today.

Early 1900's

Settlers moved to the district from U.S and Europe.



1908

Postmaster, Pius Mutter was given the honor of naming the settlement, he chose Pilger German for Pilgrim.



1929

CPR being considered.

1929

The coming of the railway was the start to the village of Pilger. A J.I. Case Agency lumberyard, Hoenman's store, Gambie's rooming house, a machine shop and pool hall were some of the first businesses.

1935

School moved into town from a farmyard.



1969

Pilger was incorporated as a village.



*All information was found in the Village of Pilger Memories History Book



Services We Provide:

Electrical Construction & Maintenance

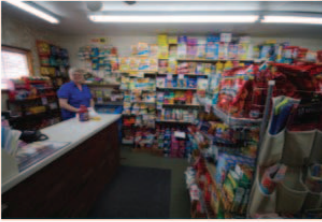
Gasoline to Purchase

Canada Post Outlet

and

Groceries

Coffee Room



OPEN—8:00am to 6:00pm

Monday to Saturday

Closed all Holidays

306-367-4967

PILGER COMMUNITY CENTRE



Hall & meeting room rentals available.

Plenty of onsite RV parking/camping (not serviced).

Contact the Pilger Rec Board @ 231-5561


Annual **SNOWMOBILE RALLY** is held on the last Saturday of January


Fifth Avenue Collection Jewellery

Denise Hauser - Jewellery Stylist

 www.fifthavenuecollectionjewellery.com/dhauser

 w.h@sasktel.net

 306-231-8398

 DeniseHauserFACjewellery

- Handmade
- Swarovski crystals, natural gemstones & AAA CZ.
- Parties, one-on-one, fundraisers, tradeshow

Saskatchewan Based Company - Head office in Moose Jaw
Celebrating 30 years of Business!



M & R Hemm Holdings Ltd.

Grain & Fertilizer Hauling

Myles and Rhonda Hemm

Phone: (306)367-4646

Cell: (306)231-7913

Fax: (306)367-4614

Email: hemmtrucking@hotmail.com

Box 140, Pilger, SK S0K 3G0

START NOW.

START HERE.

**Got a business idea?
Expanding your business?
We can help.**

1-(888)-732-8999

1-(306)-369-2610

Community
Futures Sagehill

sagehill@sasktel.net

www.cfsask.ca/sagehill

Pilger Pumpkin Festival

There were three men - Felix Fischer, Jerry Doll and Leonard Lukan, who talked about planting pumpkins and having a competition among the three of them to see who had the greenest thumb and hopefully the largest pumpkin. And so in the fall of 2004 they had 19 people bring their biggest pumpkins to Pilger for an official "weigh in". The weigh-in was held at the Pilger Community Center. Eva Lummerding was secretary at the time and was able to find quite a few people who were willing to donate baked treats with pumpkin as an ingredient.

The following year it grew to 50 people. Pies, muffins, cakes and squares were donated. A pie judging contest was added to the day's festivities along with many other activities. The festival, much like the giants that inspired the day, just kept growing and getting bigger every year. As part of this wonderful tradition, the Pilger Pumpkin Growers group has made the festival date an easy one to remember year after year - the festival is ALWAYS held on the LAST SATURDAY in SEPTEMBER.

This day sees the population of a sleepy little village climb dramatically from 50 to over 500, even if it is for just one day. People from all over Canada have attended the event and one time visitors have now become competitors. The competition is lively with chatter in the crowd ranging from admiration to good natured ribbing about "filling that tiny little thing with cement so it weighs in better".

The much anticipated event hosts the always popular pumpkin weigh-in, best pumpkin pie contest, photo contest, pumpkin carving contest, children's activities, wagon rides, BBQ, live entertainment and more! It is a source of pride among those in the community as can be witnessed by the many homes that decorate their yards with their best "Festival Attire". See you there!



* Information from <http://pilgerpumpkinfestival.webs.com/>

*Picture from www.installitdirect.com/learn/growing-pumpkins/



@TLEDR

The Village of Middle Lake

Welcome to the beautiful [Village of Middle Lake](#), bordering on Lucien Lake Regional Park.



We have a newly built [Water Treatment Plant](#) (2010) providing reverse osmosis water, as well as our new [Multi-Plex](#). This 14,000 ft building houses our Village office, and currently has 2 retail spaces to rent, 3 different size meeting rooms, and halls to accommodate any event. We have various rental packages to suit your needs.

Next to the Multi-Plex are 6 [Campsites](#) each one has 30 amp power and water hook ups, with a sewage dump on site.

The Village has many [services](#):

- K-12 School
- Credit Union
- Bar & Cafe
- Post Office
- Bowling Alley
- Sask Liquor Board
- Grocery Store
- SGI
- Car/Truck Wash
- Many Tradespersons (carpentry, construction, electrical, etc.)



Visit our webpage www.middlelake.ca or find us on Facebook

Middle Lake Map



Middle Lake

LEGEND

- | | |
|--|---|
|  Bethany Pioneer Village |  Kirsch Construction |
|  Conexus Credit Union |  Village of Middle Lake |
|  Three Lakes School |  Lucien Lake Regional Park |
|  Middle Lake Lions Club |  Middle Lake Co-op |
|  Kirsplash |  Middle Lake Steel |
|  T & J Schmidt Agencies Ltd |  Water's Edge Marina |
|  Ravenworth Cattle |  Water's Edge |
|  Kirsch Auctions |  Prairie Skies |
|  Rossignol Construction | |

The "Secret" History of Middle Lake

Middle Lake village was not originally started where it is located today. It all began on a quarter of land North East of the current village. There is a lake and a village both called Middle Lake.

1912

First store was built in original Middle Lake location by Steve Molnar. First implement shop was built by Mr. Maloni.



1914-1917

Municipal meetings held in Mr. Malonis' shop. Frank Hackl also built an implement shop for the Massey Harris Agency.



1918

Store was bought by Chris Koehler and Mr. Strassner.

1919

The store burned down and Koehler bought land and re-built. The store handled everything and mail. It was complicated to get merchandise, so it was ordered from Eaton's and Simpsons.

1928

John Lengyel opened a pool room across from Koehler's store. It became the place to spend time on a Saturday night.

1929

CPR being considered, and people decided they wanted a town between Pilger and St. Benedict.



1930

Koehler's store moved from original site with 2 tractors and 16 horses.

*All information was found in the Village of Middle Lake History Book

KIR Splash

TRUCK &
CAR WASH

·Find us on Facebook·



KirSplash Truck and Car Wash features a semi bay, as well as a car bay. We offer a cash machine and unique soap products to ensure customer satisfaction!

KIR Splash INN & SUITES



204 Railway Avenue, Middle Lake, SK. · (306) 367-2165

Wash open 8am-9pm 7 days a week!

M
i
d
d
l
e
L
a
k
e



@TLEDR



Find us on Facebook

Lucien Lake's water is perfect for water sports and recreation. Canoe and kayak rentals available.

We have docks for you to cast a line, a fish cleaning shack, and an abundance of Walleye, Perch and Northern Pike.



Lucien Lake Regional Park has the perfect amenities for families including: a brand-new mini-golf, family friendly beach, and 2 large playgrounds.



www.saskregionalparks.ca/park/lucien-lake · 306.367.4300

Lucien Lake

2
miles long
1/2 mile wide

50
feet deep in areas
Average 25 feet deep

Lucien Lake is a great lake for water sports including swimming, boating, canoeing, kayaking, tubing, water skiing, knee boarding, wake-boarding and fishing.

The Lake has 3 types of fish:

Walleye

Northern Pike

Perch

Walleye

- No spots spiny dorsal fin →
- Cheek not covered with scales



<https://www.wildlifedepartment.com/fishing/species/walleye>

https://en.wikipedia.org/wiki/Northern_pike

<http://www.qlakelodge.com/yellow-perch.htm>

<http://www.tourismsaskatchewan.com/listings/1586/lucien-lake-regional-park>

EXPERIENCE LAKE LIFE ON LUCIEN LAKE



CLEAN, SPRING FED LAKE
WALLEYE, NORTHERN PIKE &
YELLOW PERCH SPORT FISHING
NO BOATING/ATV RESTRICTIONS
PRIVATE INLAND MARINA
& BOAT LAUNCH
SWIMMING AREA ADJACENT
PLAYGROUND



RAINBOW TROUT POND
LITTLE FREE LIBRARY
COMMUNITY ORCHARD
OVER 3KM OF RECREATIONAL TRAILS
EXCELLENT CELLULAR COVERAGE
MANY CONVENIENCES NEARBY
FOUR SEASON RECREATION

M
i
d
d
l
e
L
a
k
e





- o Titled RV & Park Model Properties
- o Serviced-Power, Natural Gas, Phone
- o Engineered all season road access
- o Each Property Surrounded by trees
- o Large Lots- min. 45x90 ft +
- o Ready for Immediate Possession



- o Large, Titled Lakeside Acreages
- o No Time Requirements to Build
- o 2.5-6+ Acres
- o Extremely reasonable taxes
- o No additional fees
- o Excellent year round services



- o New Inland Marina & Boat Launch
- o Private Marina Slips Available
- o Abundant Parking Vehicles & Trailers
- o Maintenance Free Watercraft docking
- o Safe, Sheltered dock systems
- o Extended Lake Season



306.231.4630



INFO@SASKLAKEFRONT.COM



WWW.SASKLAKEFRONT.COM



M
i
d
d
l
e
L
a
k
e



@TLEDR

KIRSCH CONSTRUCTION

(2008) LTD



Kirsch Construction (2008) Ltd. specializes in aggregate supply, production, hauling, excavating, and site preparations for all your commercial or residential needs.

101 Kirsch Road,
Middle Lake, SK.
(306) 367-2165



www.kirschconstruction.ca · *find us on Facebook*



Middle Lake

A RE/MAX REALTOR®
Will open a lot of doors for you.

RE/MAX Saskatoon - Humboldt Office

Allan Olynuik - Farm, Commercial,
Residential and Acreage Properties

Corrine Olynuik - Residential and
Acreage Properties

1-306-231-7071

1-306-231-7936



olynuk@sasktel.net



@TLEDR



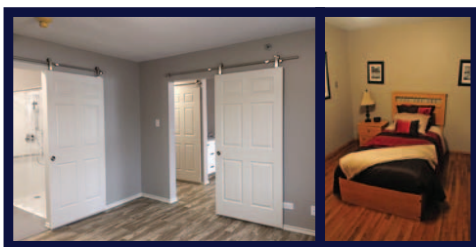
Welcome to Bethany Pioneer Village

Bethany Pioneer Village is nestled in a beautiful, park-like setting beside Lucien Lake Regional Park, just outside the Village of Middle Lake, Saskatchewan. Bethany offers compassionate, empathetic "ageing in place" to everyone needing their services with its Independent Living Units, Assisted Living and Long-Term Special Care facilities, all within grounds that attract gardeners and wildlife alike.

Independent Living
One & Two-bedroom Apartments



Assisted Living
One & Two-room Suites



M
i
d
d
l
e
L
a
k
e



 306-367-2033

 bethanyv@sasktel.net

 www.bethanypioneervillage.ca



Weekly doctor visits

Free prescription delivery

Volunteering Opportunities

Home Help available (laundry, cleaning, transport, etc.)

Walking distance to Lucien Lake Park

Spiritual care available from three clergy

Weekly church services on site

24/7 staffing at Assisted Living and Long-Term Care

Employment Opportunities

Home Care available

Wifi available

Lab work on site

Guest rooms available for family members

Walking trails on property

Dental & foot care coming in Fall, 2017

Music opportunities - handbells, choir, sing-a-longs



Regularly scheduled activities



Exercise opportunities



Outings in Bethany van

Entertainment & Special Events

Middle Lake



@TLEDR

The Middle Lake 4-H Beef Club

Started in 1939, by Hubert Griffin. He had a concern for the young people in the community, so he started a 4-H club.

Leaders Over The Years

Hubert Griffin	Delbert Kirsch
Bromley Baker	Marj Heidecker
Henry Bautz	Doreen Doborhoczki
Ed Heidecker	Garry Berting
Barry Heidecker	Lyal Heidecker
Derwent Mazur	

*All information was found in the Village of Middle Lake History Book

Three Lakes 4-H Beef Club

Achievement Day
July 5, 2018
Triple H Farm
Everyone Welcome

Contact
Lyal Heidecker for
more information
306-231-3986



CANADA
4-H Saskatchewan

Regional Show &
Sale in Melfort
July 8&9, 2018

Learn to do by
doing

Breeders of Registered Speckle Park & Purebred Black Angus



Lloydminster Stockade Roundup
Grand Champion Speckle Park Female



Melfort Regional 4-H Beef Show
Reserve Grand Champion Female

RAVENWORTH CATTLE

Garry & Donna Berting & Family

306-231-7567 306-231-5175 Middle Lake, SK



Ravenworth Cattle Speckle Park
Ravenworth Cattle Black Angus

M
i
d
d
l
e
L
a
k
e

PUBLIC EYE

PROMOTIONS & APPAREL



Prompt and professional promotional products and services for: *events not for profit organizations businesses • teams and clubs*

embroidery • heat press • appliqué • vinyl cuts • trophies
apparel • signage • promotional items • vehicle and wall decals

PHONE: **306-367-4301** • EMAIL: **publiceye@sasktel.net**



@TLEDR



**LAKE LENORE CO-OP
AGRO CENTRE
MIDDLE LAKE, SK**

Petroleum
Liquid & Dry Fertilizer
Chemical & Custom Application
Grain Bins
Tire Shop
Oil Changes
Farm Hardware

LAKE LENORE 368.2255
MIDDLE LAKE 367.4299

M
i
d
d
l
e
L
a
k
e

Pryme Edge
MANAGEMENT

SPECIALIZING IN NOT-FOR-PROFIT ORGANIZATIONS - PROFESSIONAL CONTRACT SERVICES

Guenette Bautz 306-367-4301
prymeedgemanagement@gmail.com

MIDDLE LAKE, SK

*Providing Proven Professional Services to Provincial & National
Not-for-Profit Organizations since 2007*

MIDDLE LAKE STEEL

FOR ALL YOUR HOPPER BOTTOM NEEDS



P.O. Box 131
Middle Lake SK
S0K 2X0

www.middlelakesteel.ca
306.367.4306

ROSSIGNOL

CONSTRUCTION

1-306-203-0963

Jason Rossignol
GENERAL CONTRACTOR

rossignolconst@icloud.com

Build out of
wood, steel or
concrete.

- Specializes in concrete
- Custom Home builds
- Commercial
- Infrastructure

Journey personal ~ Nsco certified

M
i
d
d
l
e
L
a
k
e



@TLEDR

MIDDLE LAKE



We Serve

Meetings on the 1st Tuesday of every month
New members always welcome!

Ken Herman: 306.231.6611

Trevor Otsig: 306.231.3773

M
i
d
d
l
e

L
a
k
e



**** NOW OPEN ****

Middle Lake, SK

Featuring unique handcrafted
creations by local artisans

Gary Skelton
Dragonfly Studio
(306) 318-9217

Deborah Skelton
Studio D
(306) 318-9217

Please call ahead as hour/days
of operation may vary

T & J Schmidt Agencies Ltd.



Motor Licence Issuer
Auto - Home - Farm - Commercial Insurance
Hail Insurance



201 Center Street
P.O. Box 100
Middle Lake SK S0K 2X0
www.tjschmidtagencies.saskbrokers.com

Phone: 306.367.2172
Cell: 306.231.5752
Fax: 306.367.2011
tjschmidtagencies@sasktel.net

VALERIE KIRSCH
AUCTIONEER

DELBERT KIRSCH
AUCTIONEER

Phone/Fax: **306-367-4925**

kirschauctions@sasktel.net

Box 209, Middle Lake, SK S0K 2X0



AUCTIONEERS & APPRAISERS
Licensed & Bonded P.L. # 916271



www.kirschauctions.ca

***Our members' financial well-being
drives everything we do.***

1-800-667-7477
conexus.ca

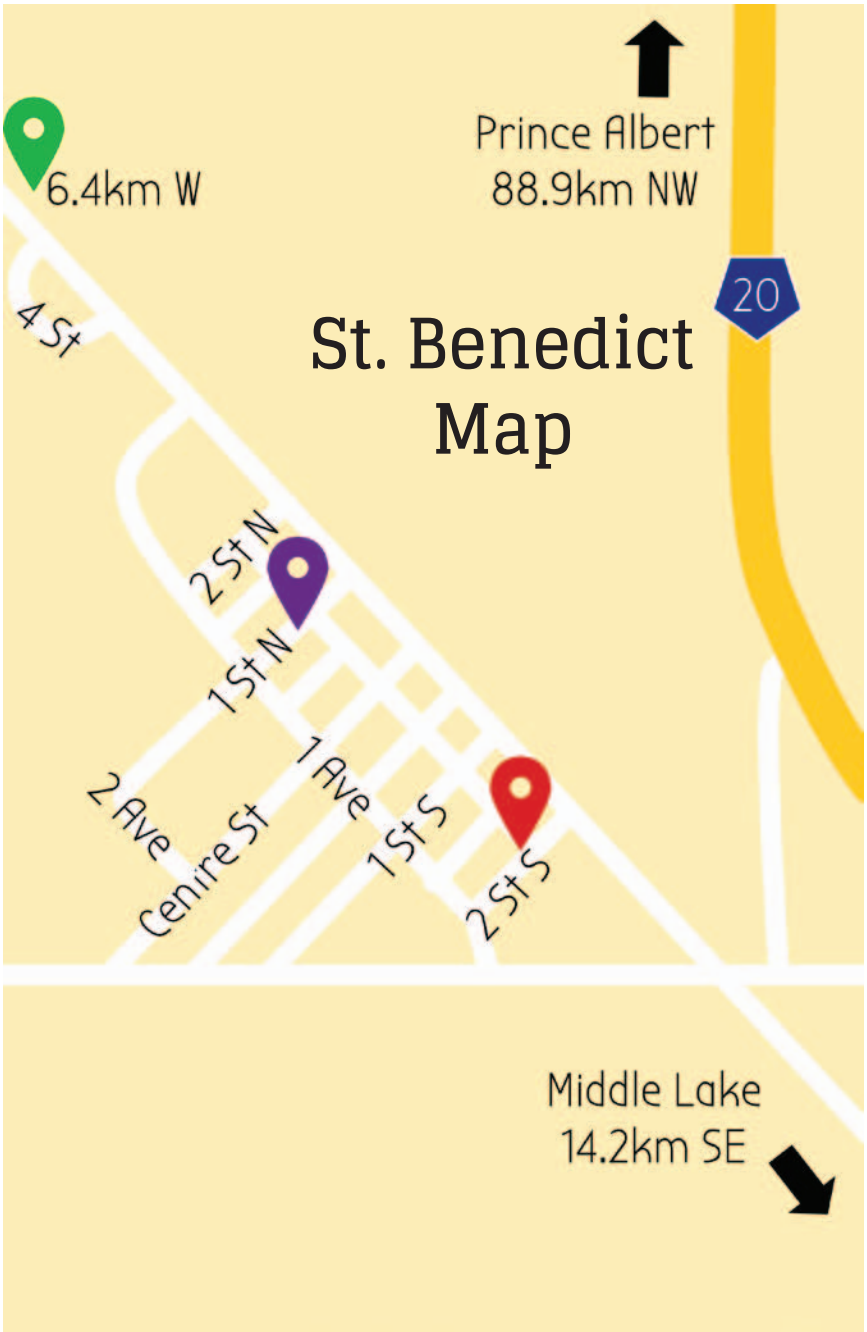
conexus
Credit Union

M
i
d
d
l
e
L
a
k
e






@TLEDR





St. Benedict Map

LEGEND

-  Cedar Ridge Greenhouse
-  Simpli Insurance Group
-  Tree House Treasures Ltd

St
B
e
n
e
d
i
c
t

The "Secret" History of St. Benedict

The village had its start around 1929 when the railroad was being implemented. As the tracks began to be laid, eager business people began to build along the main road.

1929

CPR was being considered.



1929

At this time the village still had no name, Basin Lake, Budapest, and St. Benedict were up for debate. The CPR named their station St. Benedict.



1929

One of the first store owners in St. Benedict was Steve Plascko, with his Red and White Store. A Butcher shop was located in a lean-to on the side. A Post Office was also part of the town, owned by George Renneberg.



1930

Once surveying was completed, George built a store, post office and living quarters on Main Street. On the corner was a hardware store owned by Ray Manville of Prince Albert. George gave up the store business in the early thirties but retained the post office.

1930

In 1930, John Ebert and sons built a store in St. Benedict on Main Street with living quarters in the back. It was run as a general store and operated by Sal, Ray and Norbert Ebert.

*All information was found in the Treasured Memories St. Benedict-Reynaud history book

Tree House Treasures Ltd.

Blake, Darlene, & Shelby Peters

Our charming gift store offers an array of household décor, purses, body care, outdoor furniture, fixtures, and local artists.

sanuk

MATT & NAT
live beautifully

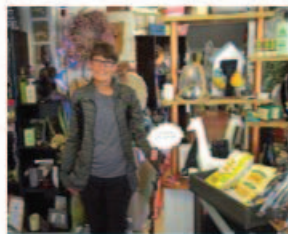
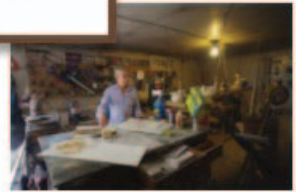
HEMPZ
100% HEMP PRODUCTS

snoozies!
SNOOZIES.COM



Featuring brand-names such as Matt & Nat, Sanuk, Hempz, Snoozies, and many more!

Open daily: 9-5, 7 days a week
Service after 5pm by appointment only



36 1st St. N, St. Benedict SK · 306-289-2001 · treehouse@yourlink.ca



@TLEDR

St
B
e
n
e
d
i
c
t

CEDAR RIDGE GREENHOUSES

10, 000 sq ft nursery open to public!

BEDDING PLANTS
PATIO POTS • HANGING BASKETS
HERBS • GIFTS • SUCCULENTS
NURSERY SUPPLIES / POTS



Monday - Saturday 9am-6pm
Sunday 10am-5pm

Tracy Carpentieri: 306.231.9081

Located 4 miles west of St. Benedict

WAKAW • ST. BENEDICT • HUMBOLDT

Simpli
Insurance Group

4 locations to serve you :

WAKAW	306-233-5330
ST-BENEDICT	306-289-2105
BRUNO	306-369-2390
VISCOUNT	306-944-2199

www.simpligroup.ca

Insurance for your Home, Farm, Auto or Business
Financial Services + Travel & Health plans
SGI—Motor licence Issuer
Fishing & Hunting Licence (Wakaw)

Smallest Fire Hall

St. Benedict's first form of fire protection in the 1920's was a bell with a long rope attached to it. It was mounted on the roof of the post office. In 1935 a petition was presented to the Rural Municipality by Councillor Frank Reinhart, requesting a Fire Engine for St. Benedict.

In September of 1935 the municipality purchased from the Dominion Fire Engine Company – two 40 gallon Heavy Fyrofoe Chemical Engines one for St. Benedict and one for Pilger – for the combined total cost of \$585.80. This was to be repaid by the ratepayers of the Hamlets by a special levy.

Fire engine chemicals were financed by the municipality until November of 1935, when St. Benedict agreed to take care of future supplies themselves. To house the local engine, a lean-to was built onto Duford's garage, which was situated on the present site of Bill Hutmacher's home. Eventually the bell was moved to the Red & White store next to the fire engine. The present fire hall was built in 1947, on what is now Railway Ave. This was the Community Fire Protection until 1968, when the three villages entered into an agreement for joint fire protection.



*All information was found in the Treasured Memories St. Benedict-Reynaud history book



Community Organizations

Within our busy, fun-filled villages, there are many clubs and organizations for children, youth, and adults to join.

These Include:

Contact Information:

Three Lakes School of Dance	306-367-4917
Three Lakes 4-H Beef Club	306-231-3986
Music Studio	306-231-9577
Middle Lake Bowling Alley	306-367-4624
Middle Lake Lions club	306-231-6611
Bethany auxiliary	306-367-2033
Middle Lake Seniors club	306-367-2402
Pilger - New Horizons Senior Citizens	306-367-4208
Art Camps	306-231-6468
Three Lakes Playschool	306-231-8373
Mom's Cub	306-367-4624
Pilger Pumpkin Growers	306-367-4946
Pilger Rec Board	306-231-5561
Lutheran Church	306-367-2100
Gospel Church	306-318-9935
Awana	306-318-9935
Catholic Churches:	
Holy Trinity - Pilger	306-682-2106
Canadian Martyrs-Middle Lake	306-367-2081
St. Benedict Parish	306-256-3218

Business Directory

5th Avenue Jewellery	16
Bethany Pioneer Village	28-29
Bregenser’s Electric Ltd.	15
Cedar Ridge Greenhouses	40
Conexus Credit Union	35
Kirsch Auctions	35
Kirsch Construction	26
Kirsplash	21
Lucien Lake Regional Park	22
Middle Lake Co-op	32
Middle Lake Lions Club	34
Middle Lake Steel	33
M & R Hemm Holdings Ltd.	16
Old Farmhouse Gift Shop	34
Pilger Rec Board	15
Pryme Edge Management	32
Public Eye Promotions	31
Ravenworth Cattle	31
Remax	27
Rossignol Construction	33
Sagehill Development	16
Simpli Insurance Group	40
T&J Schmidt Agencies Ltd.	35
Three Lakes 4-H Beef Club	30
R.M. of Three Lakes #400	4
Three Lakes School	2
Treehouse Treasures Ltd.	39
Village of Middle Lake	18
Village of Pilger	12
Waters Edge	24-25, back cover





WATER'S EDGE

at lucien lake

Our family friendly development on the West Shore gives you an escape from the everyday to reconnect with what matters most in your life.

Beautiful scenery, peace and quiet, or adventure and sport fishing - *experience it all.*

*Your choice of Properties awaits you.
Lake Life is within your reach.*

**Titled and Serviced RV, Cabin, and
Lake Home Properties**

Lots starting at only \$29,900.

Request a personal tour or take a drive to view our development.

www.sasklakefront.com

Call: 306-231-4630

Lorraine Forster

